

Implants | International

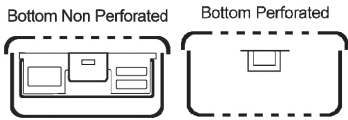
Sterilization **CONTAINERS**

Basic Model



*Sterilization
Containers*

Basic Model - Half Size



outside dimensions / mm
285x280x100

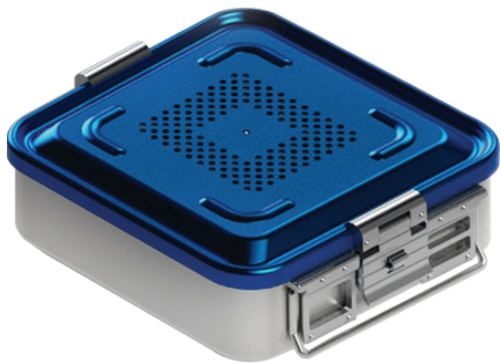
COLOUR	Non-Perforated	Perforated
GRAY	II-310.10	II- 311.10
YELLOW	II-320.10	II- 321.10
RED	II-330.10	II- 331.10
BLUE	II-340.10	II- 341.10
GREEN	II-350.10	II- 351.10
BLACK	II-360.10	II- 361.10

outside dimensions / mm
285x280x135

COLOUR	Non-Perforated	Perforated
GRAY	II-310.13	II- 311.13
YELLOW	II-320.13	II- 321.13
RED	II-330.13	II- 331.13
BLUE	II-340.13	II- 341.13
GREEN	II-350.13	II- 351.13
BLACK	II-360.13	II- 361.13

outside dimensions / mm
285x280x150

COLOUR	Non-Perforated	Perforated
GRAY	II- 310.15	II- 311.15
YELLOW	II- 320.15	II- 321.15
RED	II- 330.15	II- 331.15
BLUE	II- 340.15	II- 341.15
GREEN	II- 350.15	II- 351.15
BLACK	II- 360.15	II- 361.15



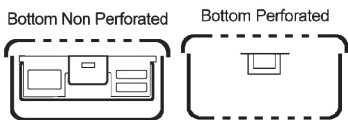
outside dimensions / mm
285x280x200

COLOUR	Non-Perforated	Perforated
GRAY	II- 310.20	II- 311.20
YELLOW	II- 320.20	II- 321.20
RED	II- 330.20	II- 331.20
BLUE	II- 340.20	II- 341.20
GREEN	II- 350.20	II- 351.20
BLACK	II- 360.20	II- 361.20

outside dimensions / mm
285x280x260

COLOUR	Non-Perforated	Perforated
GRAY	II- 310.26	II- 311.26
YELLOW	II- 320.26	II- 321.26
RED	II- 330.26	II- 331.26
BLUE	II- 340.26	II- 341.26
GREEN	II- 350.26	II- 351.26
BLACK	II- 360.26	II- 361.26

Special Size



outside dimensions / mm
350x250x100

COLOUR	Non-Perforated	Perforated
GRAY	II-910.10	II-911.10
YELLOW	II-920.10	II-921.10
RED	II-930.10	II-931.10
BLUE	II-940.10	II-941.10
GREEN	II-950.10	II-951.10
BLACK	II-960.10	II-961.10

outside dimensions / mm
350x250x135

COLOUR	Non-Perforated	Perforated
GRAY	II-910.13	II-911.13
YELLOW	II-920.13	II-921.13
RED	II-930.13	II-931.13
BLUE	II-940.13	II-941.13
GREEN	II-950.13	II-951.13
BLACK	II-960.13	II-961.13



outside dimensions / mm
350x250x150

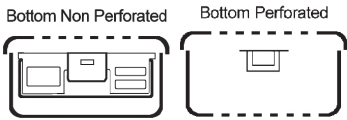
COLOUR	Non-Perforated	Perforated
GRAY	II-910.15	II-911.15
YELLOW	II-920.15	II-921.15
RED	II-930.15	II-931.15
BLUE	II-940.15	II-941.15
GREEN	II-950.15	II-951.15
BLACK	II-960.15	II-961.15

Basic Model



*Sterilization
Containers*

Basic Model - Middle Size



outside dimensions / mm
465x280x100

COLOUR	Non-Perforated	Perforated
GRAY	II- 210.10	II- 211.10
YELLOW	II- 220.10	II- 221.10
RED	II- 230.10	II- 231.10
BLUE	II- 240.10	II- 241.10
GREEN	II- 250.10	II- 251.10
BLACK	II- 260.10	II- 261.10

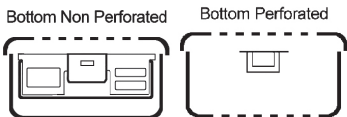
outside dimensions / mm
465x280x135

COLOUR	Non-Perforated	Perforated
GRAY	II- 210.13	II- 211.13
YELLOW	II- 220.13	II- 221.13
RED	II- 230.13	II- 231.13
BLUE	II- 240.13	II- 241.13
GREEN	II- 250.13	II- 251.13
BLACK	II- 260.13	II- 261.13

outside dimensions / mm
465x280x150

COLOUR	Non-Perforated	Perforated
GRAY	II- 210.15	II- 211.15
YELLOW	II- 220.15	II- 221.15
RED	II- 230.15	II- 231.15
BLUE	II- 240.15	II- 241.15
GREEN	II- 250.15	II- 251.15
BLACK	II- 260.15	II- 261.15

Basic Model - Full Size



outside dimensions / mm
580x280x100

COLOUR	Non-Perforated	Perforated
GRAY	II- 110.10	II- 111.10
YELLOW	II- 120.10	II- 121.10
RED	II- 130.10	II- 131.10
BLUE	II- 140.10	II- 141.10
GREEN	II- 150.10	II- 151.10
BLACK	II- 160.10	II- 161.10

outside dimensions / mm
580x280x135

COLOUR	Non-Perforated	Perforated
GRAY	II- 110.13	II- 111.13
YELLOW	II- 120.13	II- 121.13
RED	II- 130.13	II- 131.13
BLUE	II- 140.13	II- 141.13
GREEN	II- 150.13	II- 151.13
BLACK	II- 160.13	II- 161.13

outside dimensions / mm
580x280x150

COLOUR	Non-Perforated	Perforated
GRAY	II- 110.15	II- 111.15
YELLOW	II- 120.15	II- 121.15
RED	II- 130.15	II- 131.15
BLUE	II- 140.15	II- 141.15
GREEN	II- 150.15	II- 151.15
BLACK	II- 160.15	II- 161.15

outside dimensions / mm
580x280x200

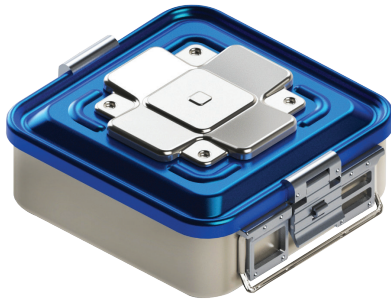
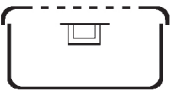
COLOUR	Non-Perforated	Perforated
GRAY	II- 110.20	II- 111.20
YELLOW	II- 120.20	II- 121.20
RED	II- 130.20	II- 131.20
BLUE	II- 140.20	II- 141.20
GREEN	II- 150.20	II- 151.20
BLACK	II- 160.20	II- 161.20

outside dimensions / mm
580x280x260

COLOUR	Non-Perforated	Perforated
GRAY	II- 110.26	II- 111.26
YELLOW	II- 120.26	II- 121.26
RED	II- 130.26	II- 131.26
BLUE	II- 140.26	II- 141.26
GREEN	II- 150.26	II- 151.26
BLACK	II- 160.26	II- 161.26

Bio-Barrier Model - Half Size

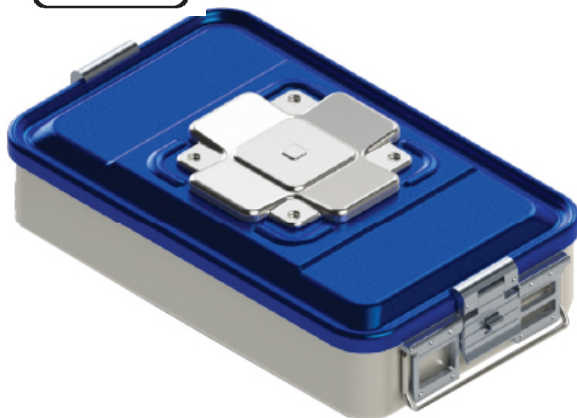
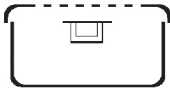
Bottom Non Perforated



outside dimensions / mm 285x280x100		outside dimensions / mm 285x280x135		outside dimensions / mm 285x280x150		outside dimensions / mm 285x280x200		outside dimensions / mm 285x280x260	
COLOUR	CAT. NO.	COLOUR	CAT. NO.	COLOUR	CAT. NO.	COLOUR	CAT. NO.	COLOUR	CAT. NO.
GRAY	II- 310.10B	GRAY	II- 310.13B	GRAY	II- 310.15B	GRAY	II- 310.20B	GRAY	II- 310.26B
YELLOW	II- 320.10B	YELLOW	II- 320.13B	YELLOW	II- 320.15B	YELLOW	II- 320.20B	YELLOW	II- 320.26B
RED	II- 330.10B	RED	II- 330.13B	RED	II- 330.15B	RED	II- 330.20B	RED	II- 330.26B
BLUE	II- 340.10B	BLUE	II- 340.13B	BLUE	II- 340.15B	BLUE	II- 340.20B	BLUE	II- 340.26B
GREEN	II- 350.10B	GREEN	II- 350.13B	GREEN	II- 350.15B	GREEN	II- 350.20B	GREEN	II- 350.26B
BLACK	II- 360.10B	BLACK	II- 360.13B	BLACK	II- 360.15B	BLACK	II- 360.20B	BLACK	II- 360.26B

Bio-Barrier Model - Middle Size

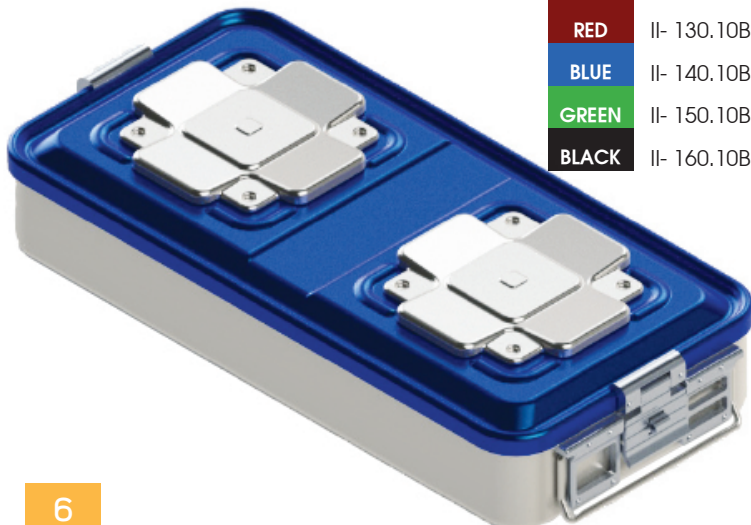
Bottom Non Perforated



outside dimensions / mm 465x280x100		outside dimensions / mm 465x280x135		outside dimensions / mm 465x280x150	
COLOUR	CAT. NO.	COLOUR	CAT. NO.	COLOUR	CAT. NO.
GRAY	II- 210.10B	GRAY	II- 210.13B	GRAY	II- 210.15B
YELLOW	II- 220.10B	YELLOW	II- 220.13B	YELLOW	II- 220.15B
RED	II- 230.10B	RED	II- 230.13B	RED	II- 230.15B
BLUE	II- 240.10B	BLUE	II- 240.13B	BLUE	II- 240.15B
GREEN	II- 250.10B	GREEN	II- 250.13B	GREEN	II- 250.15B
BLACK	II- 260.10B	BLACK	II- 260.13B	BLACK	II- 260.15B

Bio-Barrier Model - Full Size

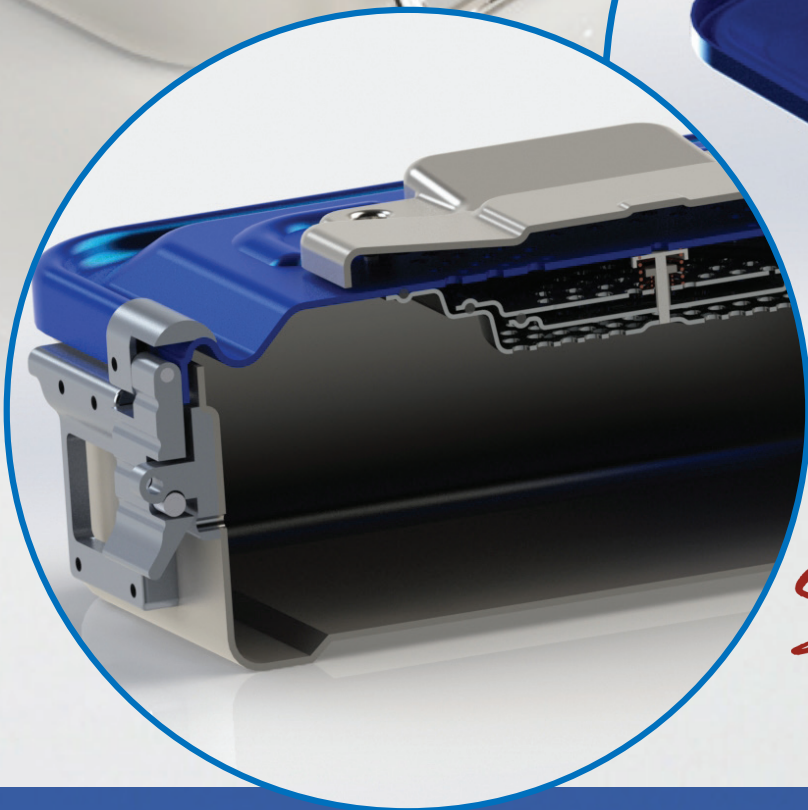
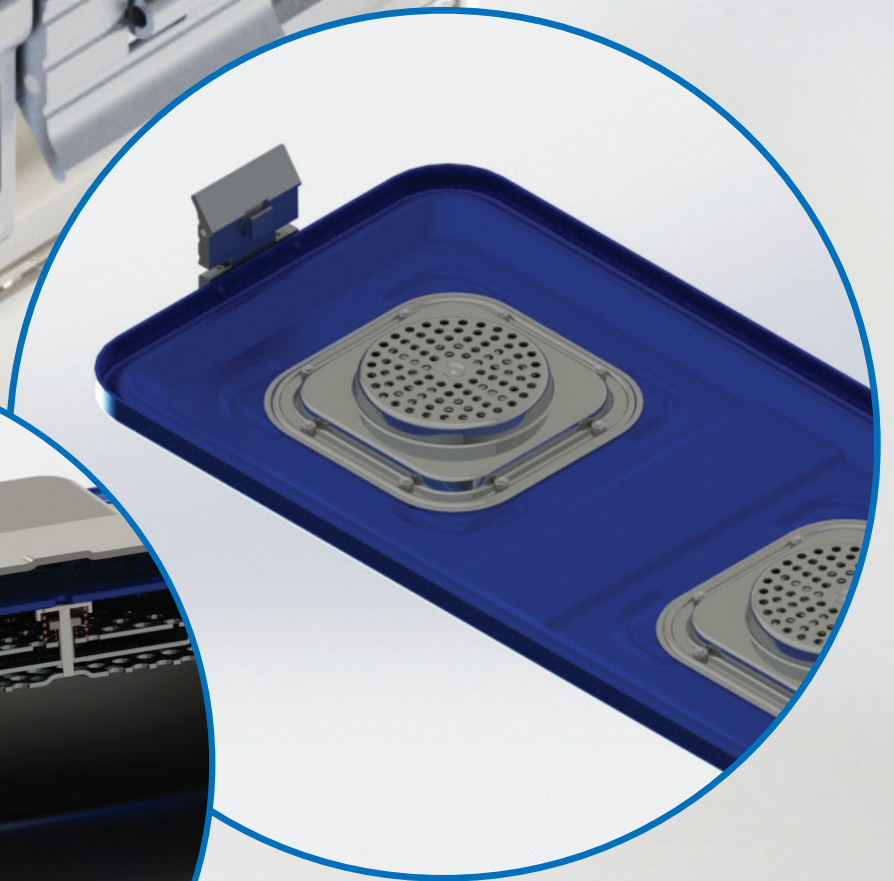
Bottom Non Perforated



outside dimensions / mm 580x280x100		outside dimensions / mm 580x280x135		outside dimensions / mm 580x280x150		outside dimensions / mm 580x280x200	
COLOUR	CAT. NO.	COLOUR	CAT. NO.	COLOUR	CAT. NO.	COLOUR	CAT. NO.
GRAY	II- 110.10B	GRAY	II- 110.13B	GRAY	II- 110.15B	GRAY	II- 110.20B
YELLOW	II- 120.10B	YELLOW	II- 120.13B	YELLOW	II- 120.15B	YELLOW	II- 120.20B
RED	II- 130.10B	RED	II- 130.13B	RED	II- 130.15B	RED	II- 130.20B
BLUE	II- 140.10B	BLUE	II- 140.13B	BLUE	II- 140.15B	BLUE	II- 140.20B
GREEN	II- 150.10B	GREEN	II- 150.13B	GREEN	II- 150.15B	GREEN	II- 150.20B
BLACK	II- 160.10B	BLACK	II- 160.13B	BLACK	II- 160.15B	BLACK	II- 160.20B

outside dimensions / mm 580x280x260	
COLOUR	CAT. NO.
GRAY	II- 110.26B
YELLOW	II- 120.26B
RED	II- 130.26B
BLUE	II- 140.26B
GREEN	II- 150.26B
BLACK	II- 160.26B

Bio-Barrier Model



Sterilization Containers

Mini Model

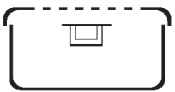


Sterilization Containers

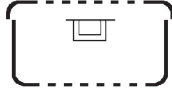
Mini Containers



Bottom Non Perforated



Bottom Perforated



outside dimensions / mm
300x140x50

COLOUR	Non-Perforated	Perforated
GRAY	II- 410.04	II- 411.04
YELLOW	II- 420.04	II- 421.04
RED	II- 430.04	II- 431.04
BLUE	II- 440.04	II- 441.04
GREEN	II- 450.04	II- 451.04
BLACK	II- 460.04	II- 461.04

outside dimensions / mm
300x140x70

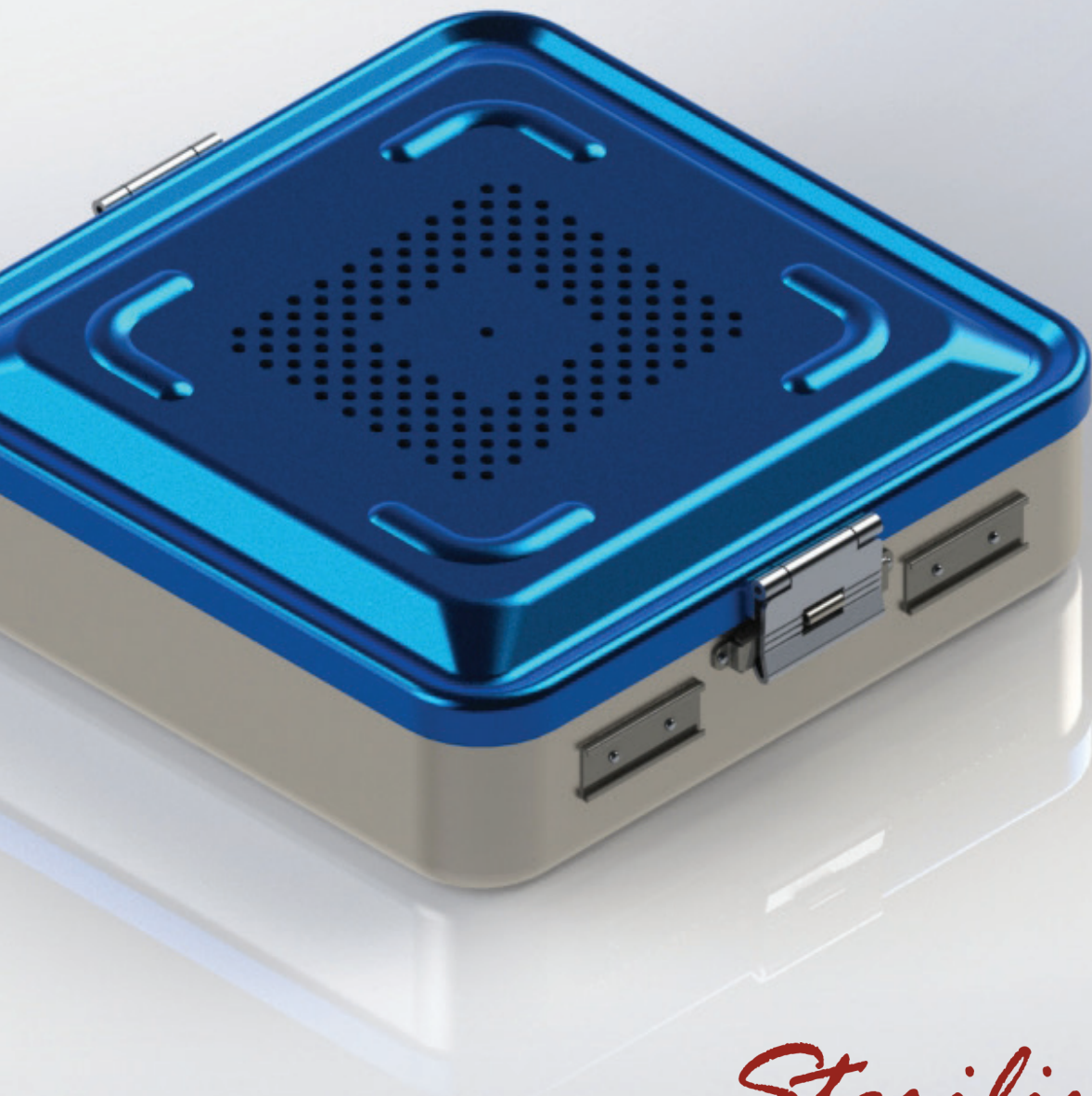
COLOUR	Non-Perforated	Perforated
GRAY	II- 410.07	II- 411.07
YELLOW	II- 420.07	II- 421.07
RED	II- 430.07	II- 431.07
BLUE	II- 440.07	II- 441.07
GREEN	II- 450.07	II- 451.07
BLACK	II- 460.07	II- 461.07

outside dimensions / mm
300x140x100

COLOUR	Non-Perforated	Perforated
GRAY	II- 410.10	II- 411.10
YELLOW	II- 420.10	II- 421.10
RED	II- 430.10	II- 431.10
BLUE	II- 440.10	II- 441.10
GREEN	II- 450.10	II- 451.10
BLACK	II- 460.10	II- 461.10



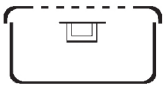
Dental & Flat Model



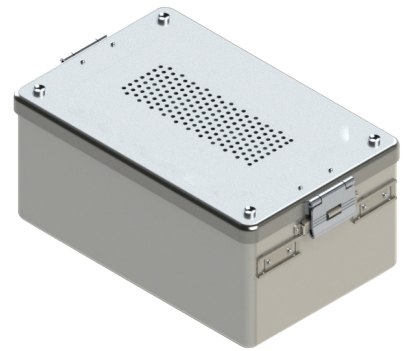
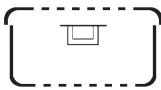
*Sterilization
Containers*

Dental Containers

Bottom Non Perforated



Lid and Bottom Perforated



outside dimensions / mm

310x190x50

COLOUR	Non-Perforated	Perforated
GRAY	II- 510.04	II-511.04
YELLOW	II- 520.04	II-521.04
RED	II- 530.04	II-531.04
BLUE	II- 540.04	II-541.04
GREEN	II- 550.04	II-551.04
BLACK	II- 560.04	II-561.04

outside dimensions / mm

310x190x65

COLOUR	Non-Perforated	Perforated
GRAY	II- 510.06	II-511.06
YELLOW	II- 520.06	II-521.06
RED	II- 530.06	II-531.06
BLUE	II- 540.06	II-541.06
GREEN	II- 550.06	II-551.06
BLACK	II- 560.06	II-561.06

outside dimensions / mm

310x190x100

COLOUR	Non-Perforated	Perforated
GRAY	II-510.10	II-511.10
YELLOW	II-520.10	II-521.10
RED	II-530.10	II-531.10
BLUE	II-540.10	II-541.10
GREEN	II-550.10	II-551.10
BLACK	II-560.10	II-561.10

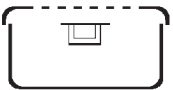
outside dimensions / mm

310x190x130

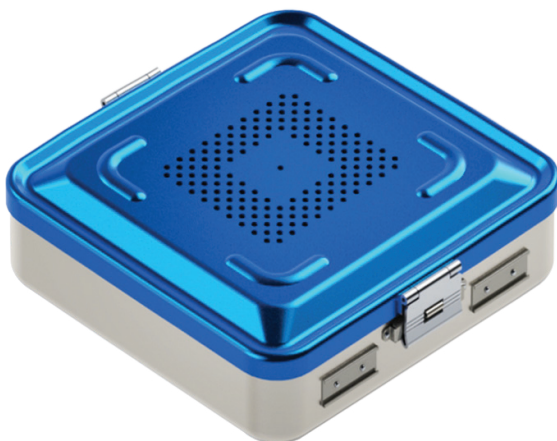
COLOUR	Non-Perforated	Perforated
GRAY	II- 510.13	II-511.13
YELLOW	II- 520.13	II-521.13
RED	II- 530.13	II-531.13
BLUE	II- 540.13	II-541.13
GREEN	II- 550.13	II-551.13
BLACK	II- 560.13	II-561.13

Flat Containers

Bottom Non Perforated



Bottom Perforated



outside dimensions / mm

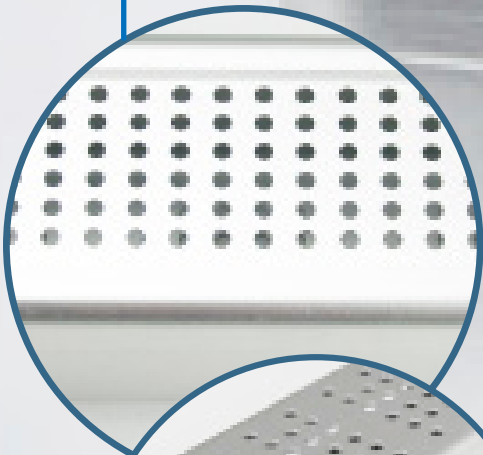
285x280x95

COLOUR	Non-Perforated	Perforated
GRAY	II- 810.08	II- 811.08
YELLOW	II- 820.08	II- 821.08
RED	II- 830.08	II- 831.08
BLUE	II- 840.08	II- 841.08
GREEN	II- 850.08	II- 851.08
BLACK	II- 860.08	II- 861.08

Endoscopy & Implant



Bottom



Lid



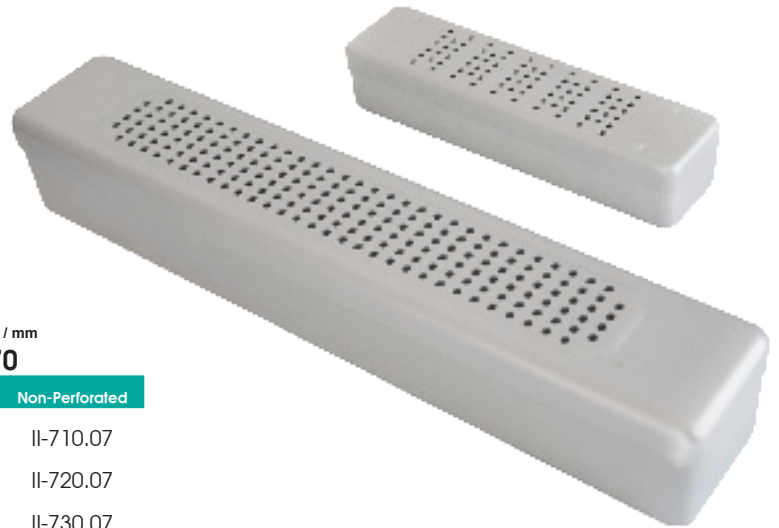
*Sterilization
Containers*

Endoscopy Containers

Bottom Non Perforated
(Non Filter)



Lid Perforated - Bottom
Perforated (Non Filter)



outside dimensions / mm

250x60x50

COLOUR	Perforated	Non-Perforated
GRAY	II-711.05	II-710.05
YELLOW	II-721.05	II-720.05
RED	II-731.05	II-730.05
BLUE	II-741.05	II-740.05
GREEN	II-751.05	II-750.05
BLACK	II-761.05	II-760.05

outside dimensions / mm

450x70x70

COLOUR	Perforated	Non-Perforated
GRAY	II-711.07	II-710.07
YELLOW	II-721.07	II-720.07
RED	II-731.07	II-730.07
BLUE	II-741.07	II-740.07
GREEN	II-751.07	II-750.07
BLACK	II-761.07	II-760.07

Implant Containers

Bottom Non Perforated
(Non Filter)



Lid Perforated - Bottom
Perforated (Non Filter)



outside dimensions / mm

310x138x65

COLOUR	Perforated	Non-Perforated
GRAY	II-611.06	II-610.06
YELLOW	II-621.06	II-620.06
RED	II-631.06	II-630.06
BLUE	II-641.06	II-640.06
GREEN	II-651.06	II-650.06
BLACK	II-661.06	II-660.06

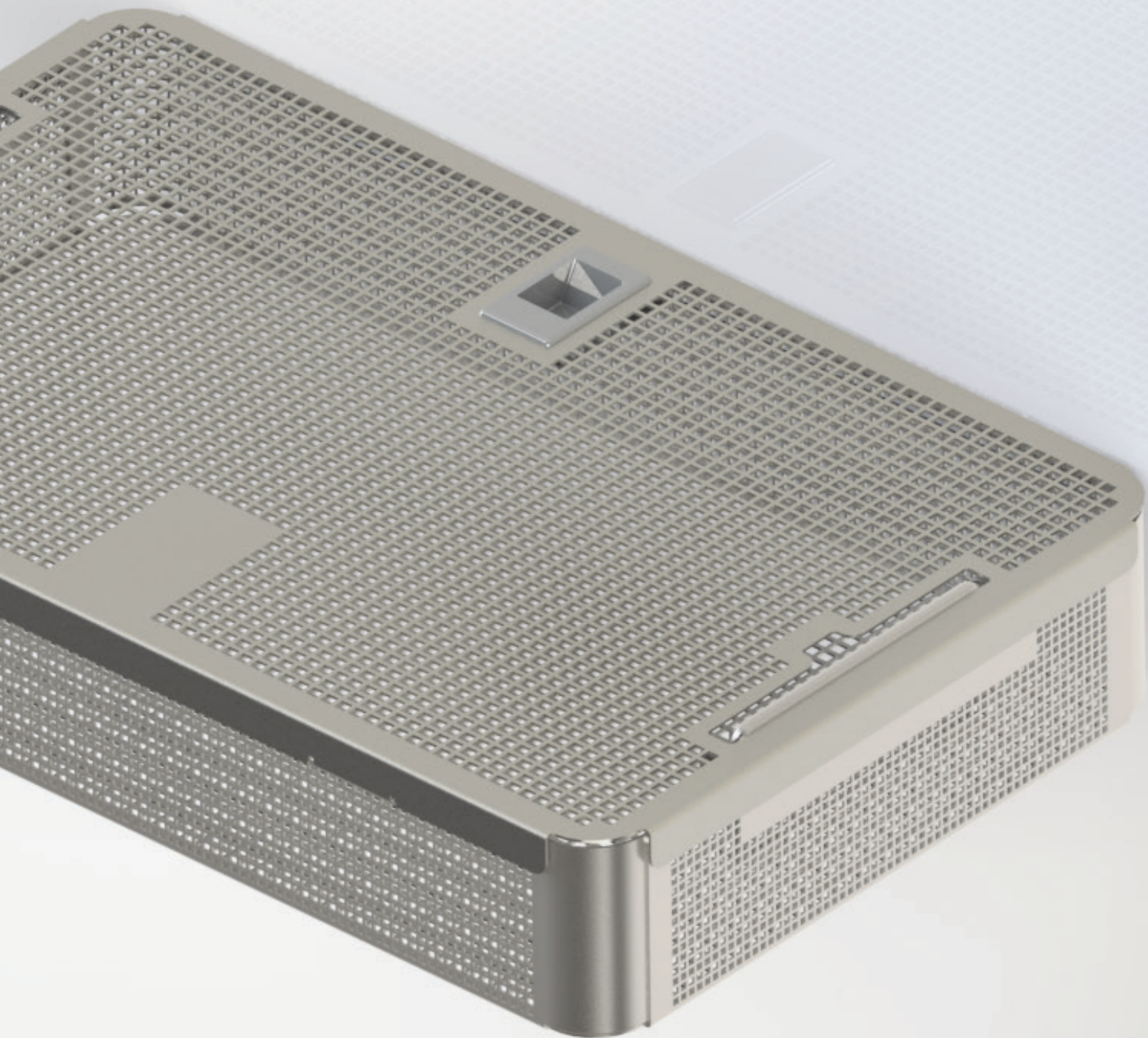
outside dimensions / mm

500x155x75

COLOUR	Perforated	Non-Perforated
GRAY	II-611.07	II-610.07
YELLOW	II-621.07	II-620.07
RED	II-631.07	II-630.07
BLUE	II-641.07	II-640.07
GREEN	II-651.07	II-650.07
BLACK	II-661.07	II-660.07



Sheet Baskets



*Sterilization
Containers*

Sheet Baskets



PERFORATED SHEET BASKET

MM	CAT. NO.
540X250X30	II-S190.03
540X250X50	II-S190.05
540X250X70	II-S190.07
540X250X100	II-S190.10
485X250X30	II-S290.03
485X250X50	II-S290.05
485X250X70	II-S290.07
485X250X100	II-S290.10
245X250X30	II-S490.03
245X250X50	II-S490.05
245X250X70	II-S490.07
245X250X100	II-S490.10
405X250X30	II-S390.03
405X250X50	II-S390.05
405X250X70	II-S390.07
405X250X100	II-S390.10

PERFORATED SHEET BASKET WITH LID

MM	CAT. NO.
540X250X30	II-S191.03
540X250X50	II-S191.05
540X250X70	II-S191.07
540X250X100	II-S191.10
485X250X30	II-S291.03
485X250X50	II-S291.05
485X250X70	II-S291.07
485X250X100	II-S291.10
245X250X30	II-S491.03
245X250X50	II-S491.05
245X250X70	II-S491.07
245X250X100	II-S491.10
405X250X30	II-S391.03
405X250X50	II-S391.05
405X250X70	II-S391.07
405X250X100	II-S391.10

Mini Sheet Baskets



PERFORATED SHEET BASKET

MM	CAT. NO.
265X120X30	II-S590.03
265X120X50	II-S590.05
265X120X70	II-S590.07

PERFORATED SHEET BASKET WITH LID

MM	CAT. NO.
265X120X30	II-S591.03
265X120X50	II-S591.05
265X120X70	II-S591.07

Dental Sheet Baskets



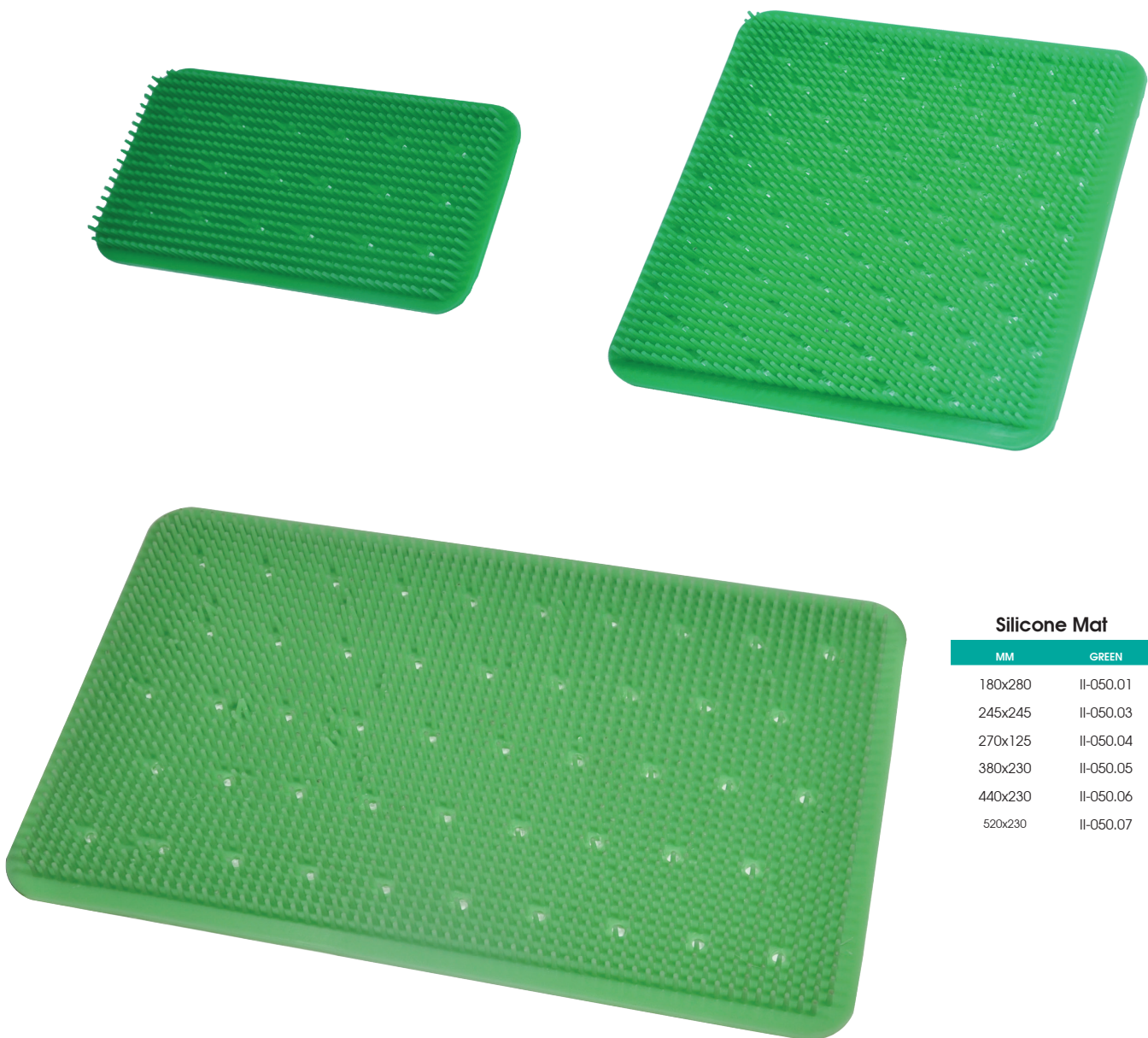
PERFORATED SHEET BASKET

MM	CAT. NO.
274X170X50	II-S690.50
274X170X70	II-S690.70

PERFORATED SHEET BASKET WITH LID

MM	CAT. NO.
274X170X50	II-S691.50
274X170X70	II-S691.70

General Accessories



Silicone Mat

MM	GREEN
180x280	II-050.01
245x245	II-050.03
270x125	II-050.04
380x230	II-050.05
440x230	II-050.06
520x230	II-050.07

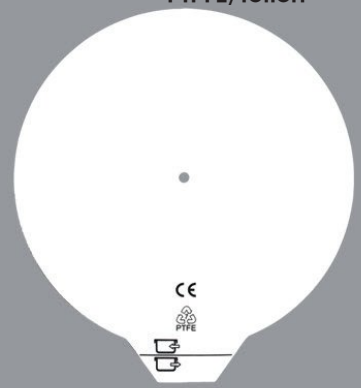
Pap



Textile



PTPFE/Teflon

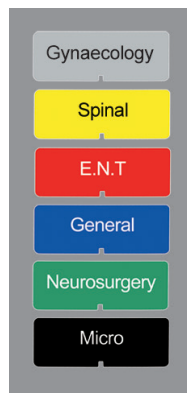


CAT. NO.	PRODUCT NAME
----------	--------------

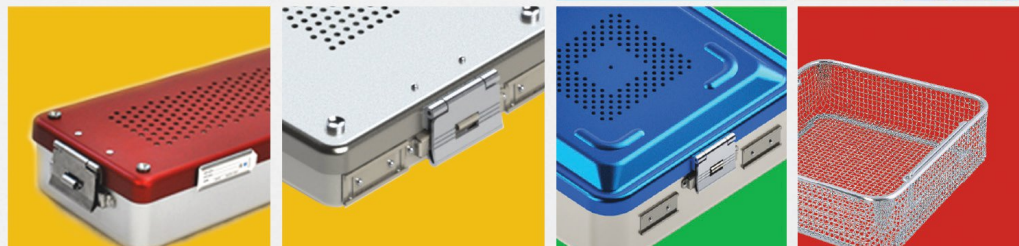
II-012.01	Paper Filter Pack Of 100 For Half, Special, Middle and Full Size Containers
II-012.02	Paper Filter Pack Of 100 For Mini Size Containers
II-012.03	Paper Filter Pack Of 100 For Dental Size Containers
II-010.01	Paper Filter With Indicator Pack Of 100 For Half, Middle and Full Containers
II-010.02	Paper Filter With Indicator Pack Of 100 For Dental and Mini Containers
II-013.01	Single Text File Filter For Half, Special, Middle and Full Size Containers
II-013.02	Single Text File For Mini Containers
II-013.03	Single Text File For Dental Containers
II-014.01	PTFE Filter For Half, Special, Middle and Full Size Containers
II-014.02	PTFE Filter For Mini Containers
II-014.03	PTFE Filter For Dental Containers
II-810.00	Pack Of 100 Paper Label With Indicator For Half-Midi-Full Size Containers
II-812.00	Pack Of 100 Paper Label With Indicator For Dental and Mini Containers
II-813.00	Pack Of 250 Class 6 Indicator Strips
II-011.01	Pack Of 100 Plastic Security Seal
II-300.00S	HII-LF SIZE SII-FETY LID
II-200.00S	MIDDLE SIZE SII-FETY LID
II-100.00S	FULL SIZE SII-FETY LID

Coloured Identification Labes

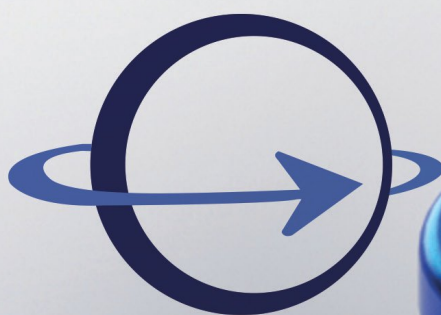
COLOUR	CAT. NO.
GRAY	II-020.01
YELLOW	II-020.02
RED	II-020.03
BLUE	II-020.04
GREEN	II-020.05
BLACK	II-020.06



sterilization



containers



Implants | International



+33 4 67 30 34 32
gvincent@implants-international.fr
mmekhalfa@implants-international.fr